

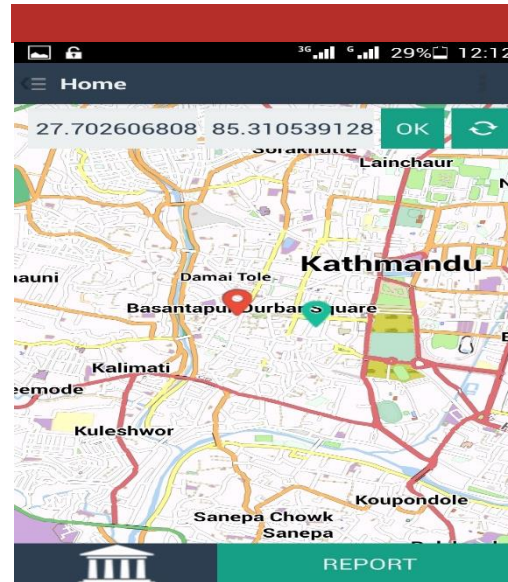


Continuously Operating GPS station at KU Central Campus

Scholarship

Bachelor of Engineering in Geomatics Engineering is a joint program of Kathmandu University, School of Engineering and Land Management Training Centre (LMTTC). LMTTC will provide 33% government scholarships for 21 students (three students from each of the seven province) based on merit. The university also provides scholarship for academically bright but financially weak students.

“Quality Education for Leadership”



Screen dump of mobile app developed at DCGE

Department of Civil & Geomatics Engineering

School of Engineering

Dhulikhel, Kavre, P.O Box 6250,
Kathmandu Nepal

Phone: 977-11-661399 Ext # 1109

Fax: 977-11-661443



Students doing engineering survey in close camp

www.ku.edu.np/dcge



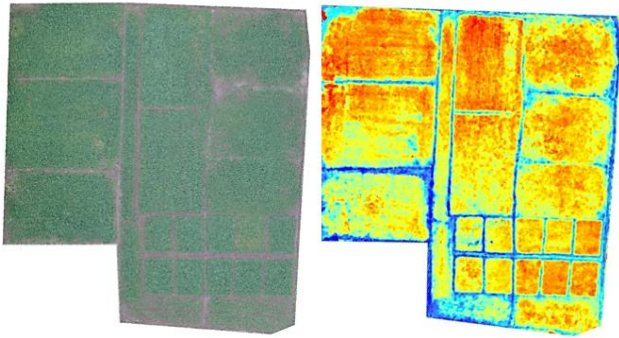
KATHMANDU UNIVERSITY (KU)



Program

Bachelor of Engineering
in
Geomatics Engineering

Department of Civil & Geomatics
Engineering (DCGE)



Use of UAV in agriculture monitoring. RGB image (Left), Crop Surface Model (Right)

Geomatics Engineering

Geomatics Engineering is a systematic, multidisciplinary and integrated approach regarding the application of geographic data for solving real-world problems in an innovative way. Geomatics includes cutting edge technologies in digital photogrammetry, remote sensing, image processing, satellite-based global positioning system, geographic information systems and surveying for digital mapping. Applications of geomatics engineering involve land development, construction surveying, forensic surveying, hydrographic surveying and spatial data analysis.

At KU, GE students learn to use advanced techniques to design, develop, and operate systems for solving problems about the land, infrastructure, natural resources, and the environment.

4 year course on semester basis

“We don’t merely teach courses; we enhance your professional competence through regular semester as well as externally funded projects, and industrial internship.”



A textured 3D model of Shree Pashupati Temple, Panauti

In collaboration with Nepal Government



UAV Photogrammetry Practical Work

Admission Requirement

Candidates should have completed 10+2 or equivalent degree from a recognized academic institution with minimum 50% marks in aggregate and minimum 50% marks in physics, chemistry and mathematics will meet primary eligibility requirements. For details visit: www.ku.edu.np

Career Opportunities

Geomatics graduates are employed in the following organizations

- Government ministries & departments
- Nepal Army/ Nepal Police/Armed Police Force
- Nepal Electricity Authority
- Private sector in Infrastructure development activities
- NGOs/INGOs
- International job market (Universities, Private and public companies)

3.5 month survey camp during course